

KEDIA ADVISORY



DAILY BULLION REPORT

11 Nov 2024

- BULLDEX
- GOLD
- SILVER



Kedia Stocks & Commodities Research Pvt. Ltd.

Research Advisory | White Labelling | Digital Marketing



BULDEX SNAPSHOT

Commodity	Expiry	Open	High	Low	Close	% Change
MCXBULLDEX	26-Nov-24	19176.00	19237.00	19101.00	19154.00	-0.22
MCXBULLDEX	24-Dec-24	0.00	0.00	0.00	19292.00	-0.46

BULLION SNAPSHOT

Commodity	Expiry	Open	High	Low	Close	% Change
GOLD	5-Dec-24	77380.00	77628.00	77025.00	77272.00	-0.18
GOLD	5-Feb-25	78051.00	78281.00	77709.00	77902.00	-0.19
GOLDMINI	5-Dec-24	77455.00	77589.00	77031.00	77248.00	-0.18
GOLDMINI	3-Jan-25	77751.00	77987.00	77440.00	77628.00	-0.19
SILVER	5-Dec-24	92224.00	92476.00	91003.00	91269.00	-1.13
SILVER	5-Mar-25	94502.00	94826.00	93414.00	93651.00	-1.12
SILVERMINI	29-Nov-24	92299.00	92300.00	90875.00	91148.00	0.76
SILVERMINI	28-Feb-25	94912.00	94948.00	93565.00	93828.00	6.24

OPEN INTEREST SNAPSHOT

Commodity	Expiry	% Change	% Oi Change	Oi Status
MCXBULLDEX	26-Nov-24	-0.22	-15.93	Long Liquidation
MCXBULLDEX	24-Dec-24	-0.46	0.00	Long Liquidation
GOLD	5-Dec-24	-0.18	-6.39	Long Liquidation
GOLD	5-Feb-25	-0.19	10.37	Fresh Selling
GOLDMINI	5-Dec-24	-0.18	0.22	Fresh Selling
GOLDMINI	3-Jan-25	-0.19	1.94	Fresh Selling
SILVER	5-Dec-24	-1.13	-0.68	Long Liquidation
SILVER	5-Mar-25	-1.12	2.85	Fresh Selling
SILVERMINI	29-Nov-24	-1.04	0.76	Fresh Selling
SILVERMINI	28-Feb-25	-1.00	6.24	Fresh Selling

INTERNATIONAL BULLION SNAPSHOT

Commodity	Open	High	Low	Close	% Change
Gold \$	2682.55	2685.73	2681.66	2685.65	-0.40
Silver \$	31.29	31.42	31.29	31.42	0.09

RATIOS

Ratio	Price	Ratio	Price	Ratio	Price
Gold / Silver Ratio	84.66	Silver / Crudeoil Ratio	15.32	Gold / Copper Ratio	92.61
Gold / Crudeoil Ratio	12.97	Silver / Copper Ratio	109.38	Crudeoil / Copper Ratio	7.14

Important levels for Jewellery/Bullion Dealers



Booking Price for Sellers	Booking Price for Buyers
77582.00	76962.00
77792.00	76752.00



Booking Price for Sellers	Booking Price for Buyers
91989.00	90549.00
92749.00	89789.00



Booking Price for Sellers	Booking Price for Buyers
84.59	84.23
84.81	84.01

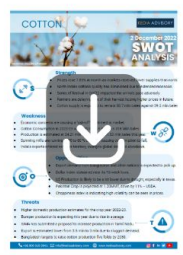


Booking Price for Sellers	Booking Price for Buyers
2685.80	2660.50
2698.70	2647.60



Booking Price for Sellers	Booking Price for Buyers
31.73	30.91
32.04	30.60

Click here for download Kedia Advisory **Special Research Reports**



Technical Snapshot



SELL GOLD DEC @ 77450 SL 77650 TGT 77200-77000. MCX

Observations

Gold trading range for the day is 76705-77915.

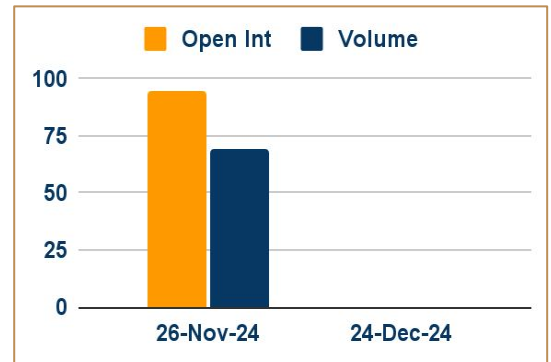
Gold remained in range amid Fed's dovish rate cut and hints of flexibility in future policy direction.

Fed's Powell signals rate cuts could adapt to labor market shifts, keeping investors cautious.

Fed Chair Jerome Powell said the results of presidential election would have no "near-term" impact on U.S. monetary policy.

Gold demand in India faltered as price volatility prompted buyers to delay purchases after strong festival sales.

OI & Volume



Spread

GOLD FEB-DEC	630.00
GOLDMINI JAN-DEC	380.00

Trading Levels

Commodity	Expiry	Close	R2	R1	PP	S1	S2
GOLD	5-Dec-24	77272.00	77915.00	77595.00	77310.00	76990.00	76705.00
GOLD	5-Feb-25	77902.00	78535.00	78220.00	77965.00	77650.00	77395.00
GOLDMINI	5-Dec-24	77248.00	77850.00	77550.00	77290.00	76990.00	76730.00
GOLDMINI	3-Jan-25	77628.00	78230.00	77930.00	77685.00	77385.00	77140.00
Gold \$		2685.65	2688.07	2686.34	2684.00	2682.27	2679.93

Technical Snapshot



SELL SILVER DEC @ 91600 SL 92400 TGT 90700-90200. MCX

Observations

Silver trading range for the day is 90115-93055.

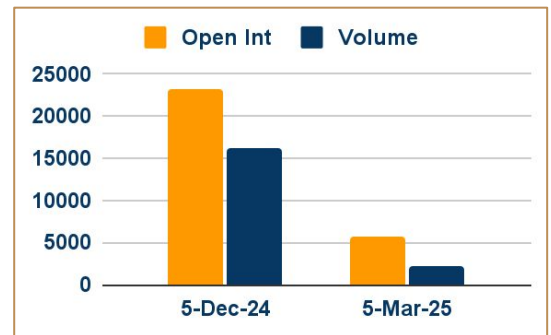
Silver dropped as markets digested Trump's victory and its potential impact on the U.S. interest rate trajectory.

Fed policymakers noted that the risks of meeting their dual mandate are "roughly balanced" but acknowledged uncertainty in the economic outlook.

Powell mentioned that the Fed could speed up if the labor market weakens or slows down as it nears neutral.

Jerome Powell avoided giving specific guidance on future rate moves, leaving room for flexibility at the December meeting and beyond.

OI & Volume



Spread

SILVER MAR-DEC	2382.00
SILVERMINI FEB-NOV	2680.00

Trading Levels

Commodity	Expiry	Close	R2	R1	PP	S1	S2
SILVER	5-Dec-24	91269.00	93055.00	92165.00	91585.00	90695.00	90115.00
SILVER	5-Mar-25	93651.00	95375.00	94515.00	93965.00	93105.00	92555.00
SILVERMINI	29-Nov-24	91148.00	92865.00	92005.00	91440.00	90580.00	90015.00
SILVERMINI	28-Feb-25	93828.00	95500.00	94665.00	94115.00	93280.00	92730.00
Silver \$		31.42	31.51	31.47	31.38	31.34	31.25

Gold remained in range as investors assessed the Federal Reserve's latest interest rate decision. The Federal Reserve cut interest rates by 25 basis points as widely expected, but indicated a cautious approach to further cuts. Fed Chair Jerome Powell said the results of presidential election would have no "near-term" impact on U.S. monetary policy.

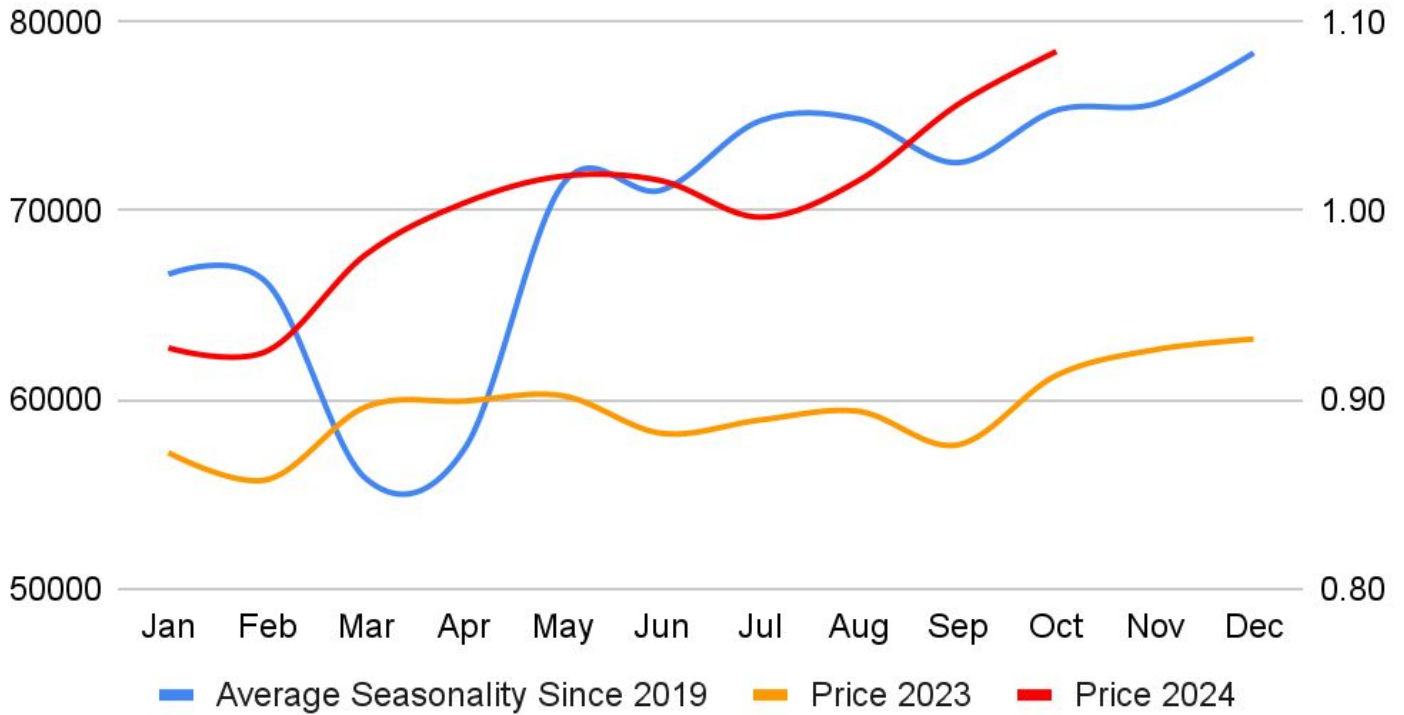
India gold demand slows; buying ticks up in Japan, Singapore - Gold demand in India faltered as price volatility prompted buyers to delay purchases after strong festival sales, while Japan and Singapore saw some buying. Indian dealers charged a premium of up to \$3 an ounce over official domestic prices. Last week they were offering a \$1 premium to a discount of up to \$5. Top consumer China's central bank refrained from purchasing gold for its reserves for the sixth consecutive month in October, data showed. Chinese dealers offered discounts between \$15-\$17 versus last week's \$11-\$14 discounts. In Hong Kong, gold was sold between \$0.2 discount and \$1 premium. In Japan, bullion was sold at par to \$1 premium, while traders in Singapore sold it between a \$0.2 discount and a \$2.20 premium.

Gold ETF demand turns positive for year – to – date, says WGC - Global physically-backed gold exchange-traded funds (ETFs) saw inflows for the sixth straight month in October, with year-to-date flows turning positive for the first time this year, the World Gold Council (WGC) said. Demand was supported by North American and Asian flows, the WGC added. Gold-backed ETFs attracted \$4.3 billion of inflows in October to lift collective holdings to 3,244 tons, the WGC said. After three years of outflows, driven by high interest rates, the past six months have seen a marked reversal. Continued inflows and record gold prices lifted global assets under management to a month-end record of \$286 billion in October, the WGC said in a note. The WGC added that worldwide gold trading volumes edged higher, supported by over-the-counter (OTC) and ETF activities.

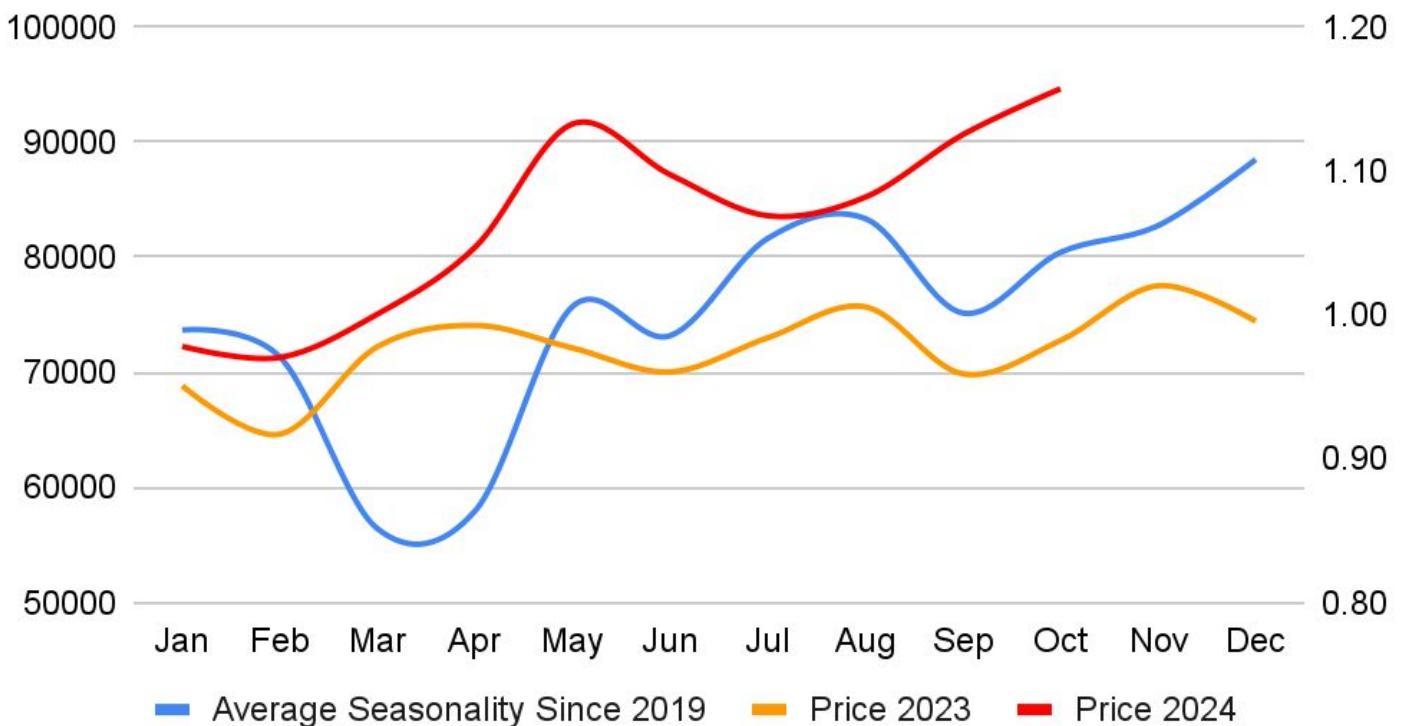
India's gold demand to hit four – year low amid price rally- India's gold demand in 2024 is likely to fall to its lowest in four years as a rally in prices to a record high is seen denting purchases during the peak festival season in the December quarter, the World Gold Council (WGC) said. Gold demand in the world's second-biggest consumer of the precious metal could stand between 700 and 750 metric tons in 2024, the lowest since 2020 and down from last year's 761 tons, Sachin Jain, CEO of WGC's Indian operations told. Indian gold consumption in the July-September quarter rose 18% to 248.3 tons, as investment demand jumped 41% and jewellery demand increased 10% in the quarter, the WGC said. India's physically backed gold exchange-traded funds (ETFs) have registered a sixth consecutive month of inflows in September and their holdings rose to 52.6 tons, up from 43.3 tons in January, WGC data showed.

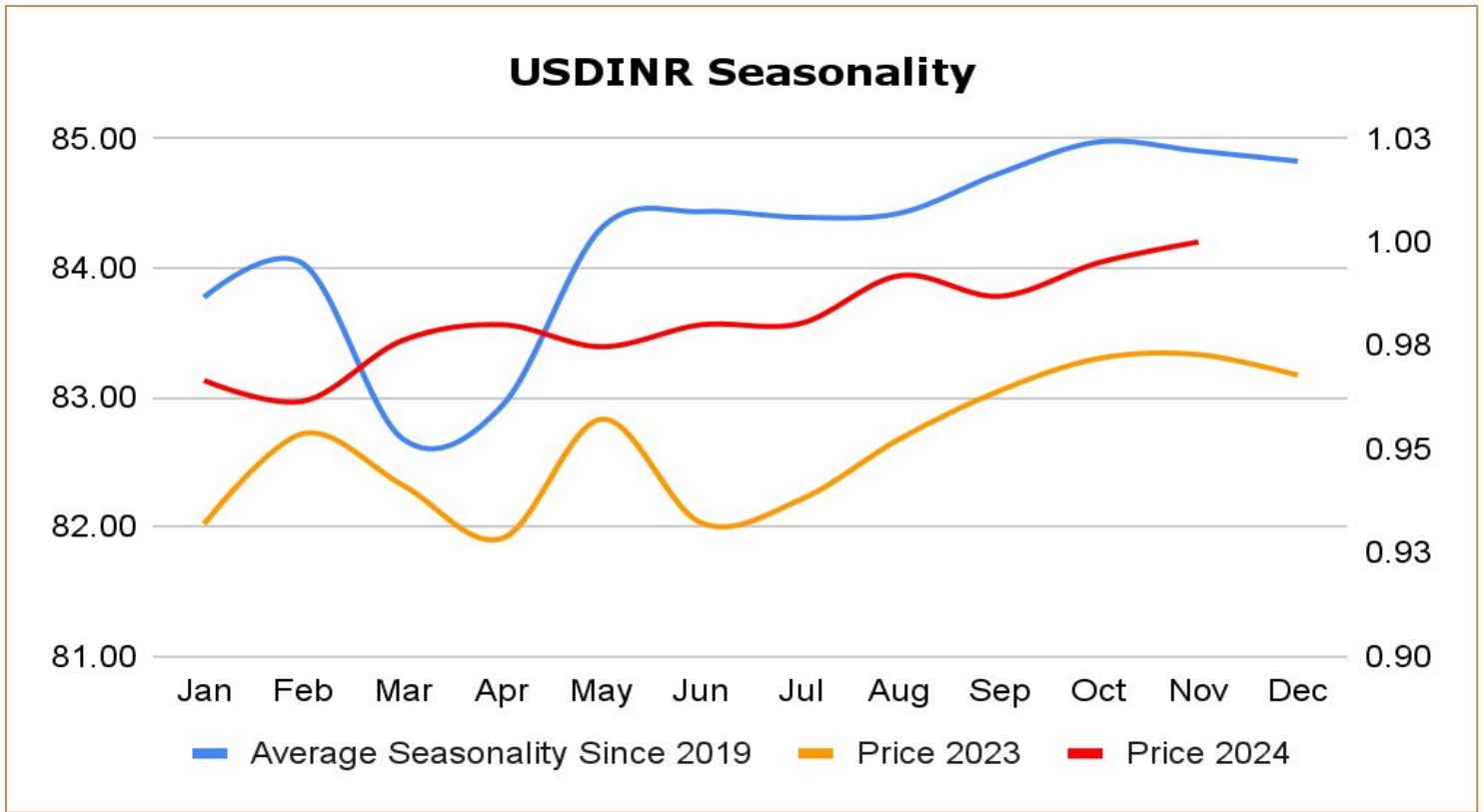
Rising investor gold demand offsets lower jewellery buying in Q3 - Global gold demand excluding over-the-counter (OTC) trading was steady year-on-year at 1,176.5 metric tons in the third quarter as higher investment activity offset reduced jewellery consumption, the WGC said. "Resurgent professional flows combined with solid bar and coin investment will offset weaker consumer demand and slower central bank buying" for gold in 2024, the WGC, said in a quarterly report. Total demand for gold, including opaque OTC trading, rose 5% to 1,313 tons, a record for a third quarter, the WGC said. It estimates the OTC flows – investment from institutional, high-net-worth investors and family offices – at 136.5 tons in July-September, up 97%. Physically-backed gold exchange traded funds (ETFs) saw the first positive quarter since the first quarter of 2022 with inflows of 95 tons, while bar and coin investment fell 9%.

Gold Seasonality



Silver Seasonality





Weekly Economic Data

Date	Curr.	Data
Nov 12	EUR	German Final CPI m/m
Nov 12	EUR	German WPI m/m
Nov 12	EUR	German ZEW Economic Sentiment
Nov 12	EUR	ZEW Economic Sentiment
Nov 12	USD	NFIB Small Business Index
Nov 12	USD	FOMC Member Waller Speaks
Nov 13	USD	Loan Officer Survey
Nov 13	USD	FOMC Member Harker Speaks
Nov 13	USD	FOMC Member Barkin Speaks
Nov 13	EUR	Industrial Production m/m
Nov 13	USD	Core CPI m/m
Nov 13	USD	CPI m/m
Nov 13	USD	CPI y/y

Date	Curr.	Data
Nov 14	USD	Core PPI m/m
Nov 14	USD	PPI m/m
Nov 14	USD	Unemployment Claims
Nov 14	USD	Natural Gas Storage
Nov 14	USD	Crude Oil Inventories
Nov 15	EUR	French Final CPI m/m
Nov 15	EUR	Italian Trade Balance
Nov 15	EUR	EU Economic Forecasts
Nov 15	USD	Core Retail Sales m/m
Nov 15	USD	Retail Sales m/m
Nov 15	USD	Empire State Manufacturing Index
Nov 15	USD	Import Prices m/m
Nov 15	USD	Capacity Utilization Rate



DISCLAIMER

KEDIA ADVISORY

This Report is prepared and distributed by Kedia Stocks & Commodities Research Pvt Ltd. Our SEBI REGISTRATION NUMBER - INH000006156. for information purposes only. The recommendations, if any, made herein are expressions of views and/or opinions and should not be deemed or construed to be neither advice for the purpose of purchase or sale through KSCRPL nor any solicitation or offering of any investment /trading opportunity. These information/opinions/ views are not meant to serve as a professional investment guide for the readers. No action is solicited based upon the information provided herein. Recipients of this Report should rely on information/data arising out of their own investigations. Readers are advised to seek independent professional advice and arrive at an informed trading/investment decision before executing any trades or making any investments. This Report has been prepared on the basis of publicly available information, internally developed data and other sources believed by KSCRPL to be reliable. KSCRPL or its directors, employees, affiliates or representatives do not assume any responsibility for or warrant the accuracy, completeness, adequacy and reliability of such information/opinions/ views. While due care has been taken to ensure that the disclosures and opinions given are fair and reasonable, none of the directors, employees, affiliates or representatives of KSCRPL shall be liable for any direct, indirect, special, incidental, consequential, punitive or exemplary damages, including lost profits arising in any way whatsoever from the information/opinions/views contained in this Report. The possession, circulation and/or distribution of this Report may be restricted or regulated in certain jurisdictions by appropriate laws. No action has been or will be taken by KSCRPL in any jurisdiction (other than India), where any action for such purpose (s) is required. Accordingly, this Report shall not be possessed, circulated and/ or distributed in any such country or jurisdiction unless such action is in compliance with all applicable laws and regulations of such country or jurisdiction. KSCRPL requires such a recipient to inform himself about and to observe any restrictions at his own expense, without any liability to KSCRPL. Any dispute arising out of this Report shall be subject to the exclusive jurisdiction of the Courts in India.

KEDIA ADVISORY

KEDIA STOCKS & COMMODITIES RESEARCH PVT LTD

Mumbai, India

SEBI REGISTRATION NUMBER - INH000006156

For more details, please contact: +91 93234 06035 / 96195 51022

Email: info@kediaadvisory.com

Regd.Off.: 1, 2, 3 & 4, 1st Floor, Tulip Bldg, Flower Valley Complex, Khadakpada Circle,
Kalyan-(W), Mumbai-421301